

TekRADIUS

Step by Step Installation

Contents

TekRADIUS Installation 3

TekRADIUS SQL Edition - Database Creation..... 6

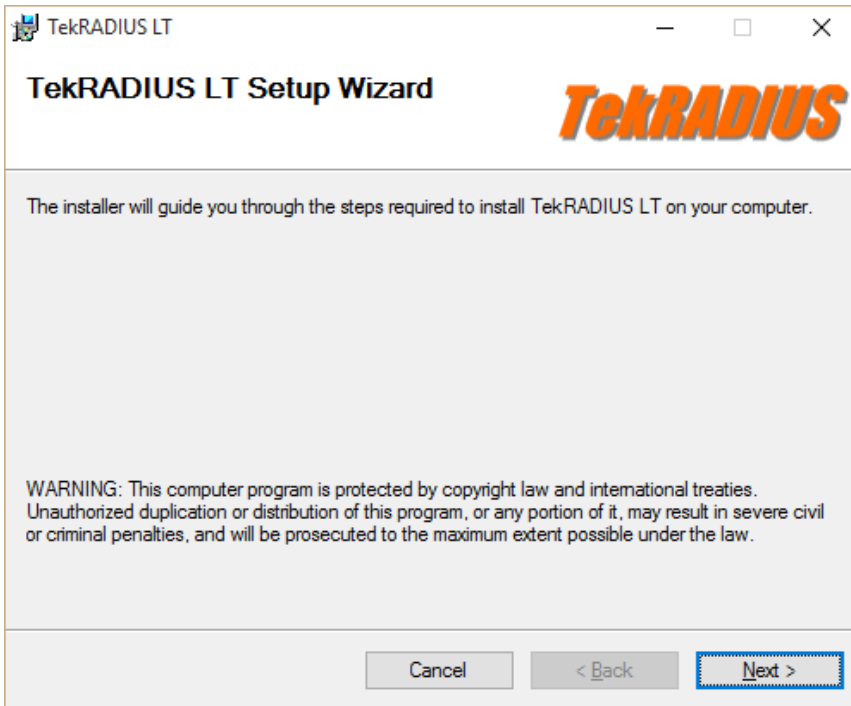
User and Group Profiles 7

Service Parameters..... 9

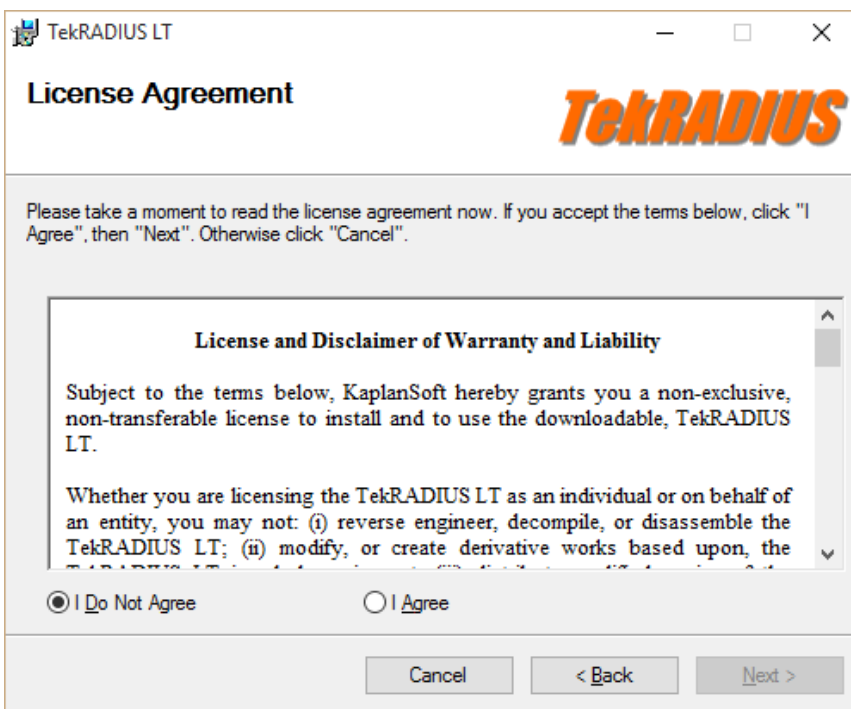
Obtaining System Id and Applying Registration Key 10

TekRADIUS Installation

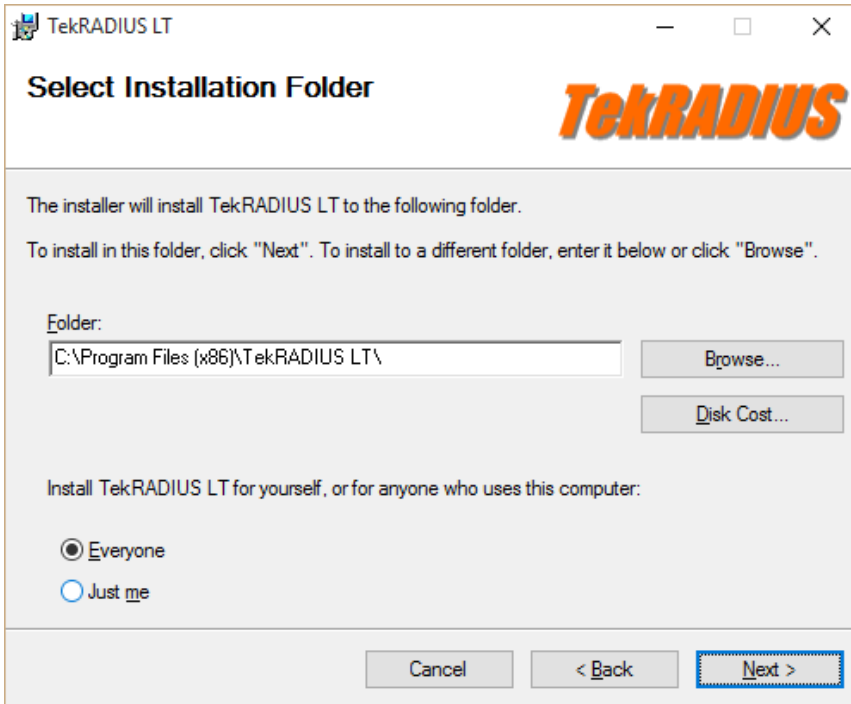
TekRADIUS distribution is in zip format. Extract contents of TekRADIUSLT.zip (or TekRADIUS.zip) to a temporary directory and client setup.exe to start installation. Please make sure that you have Microsoft .NET Framework 4.6.1 installed on your computer. Click Next.



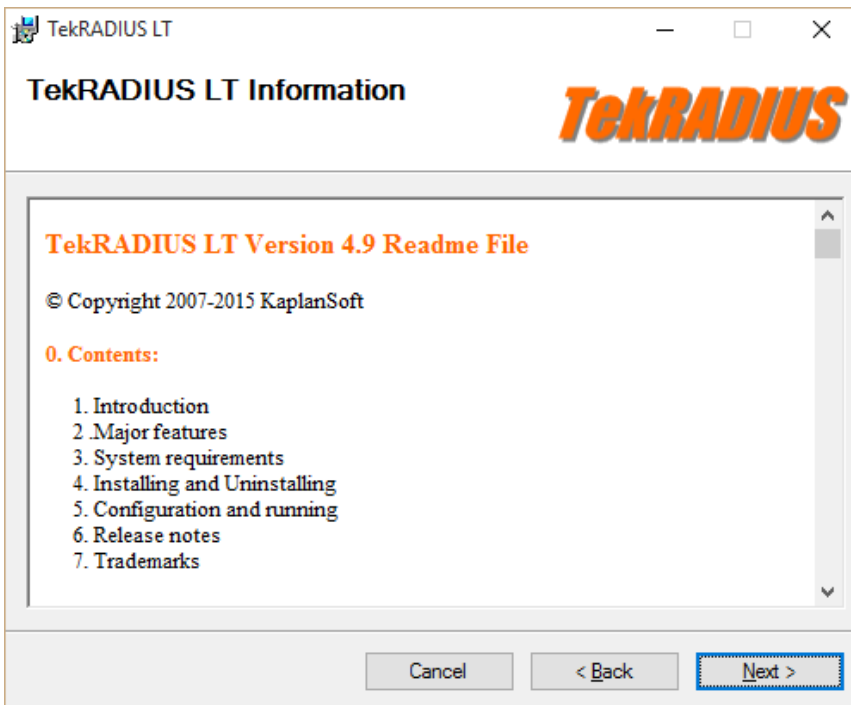
Read license agreement click "I Agree" if you are agreed with license terms and click next.



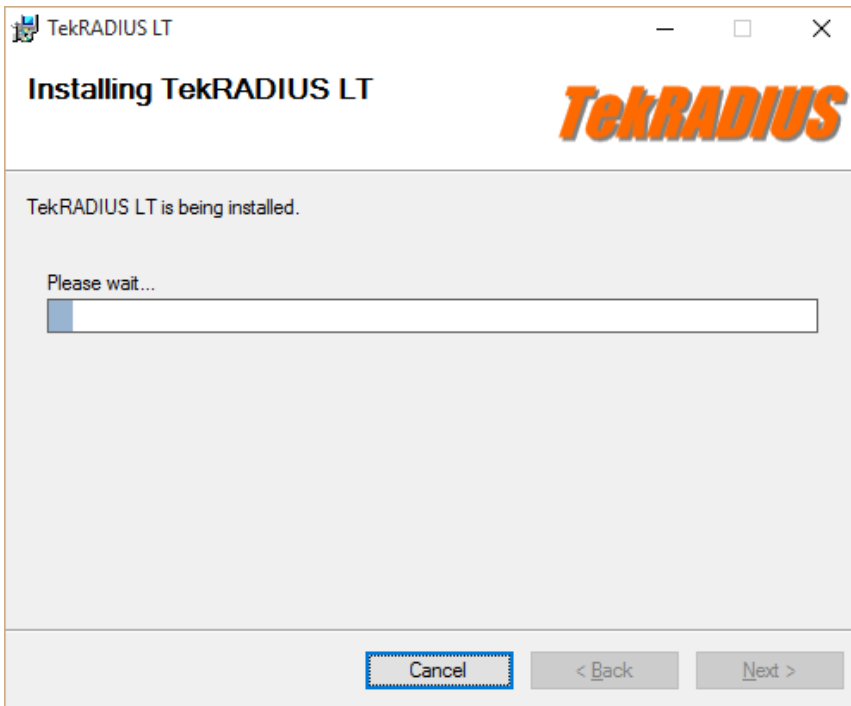
Select installation directory and click next.



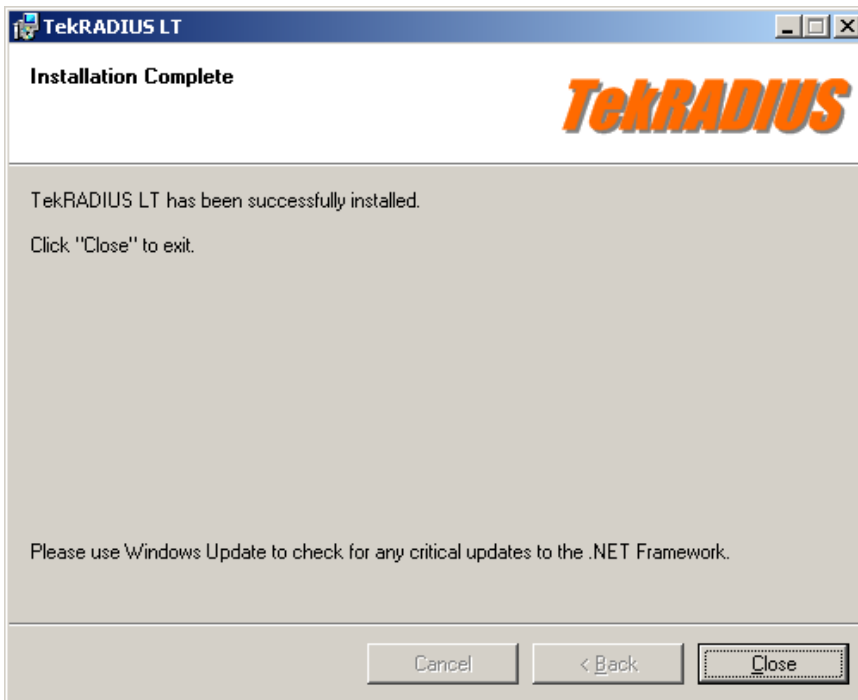
Read Readme information and click next.



TekRADIUS will be installed after these steps.

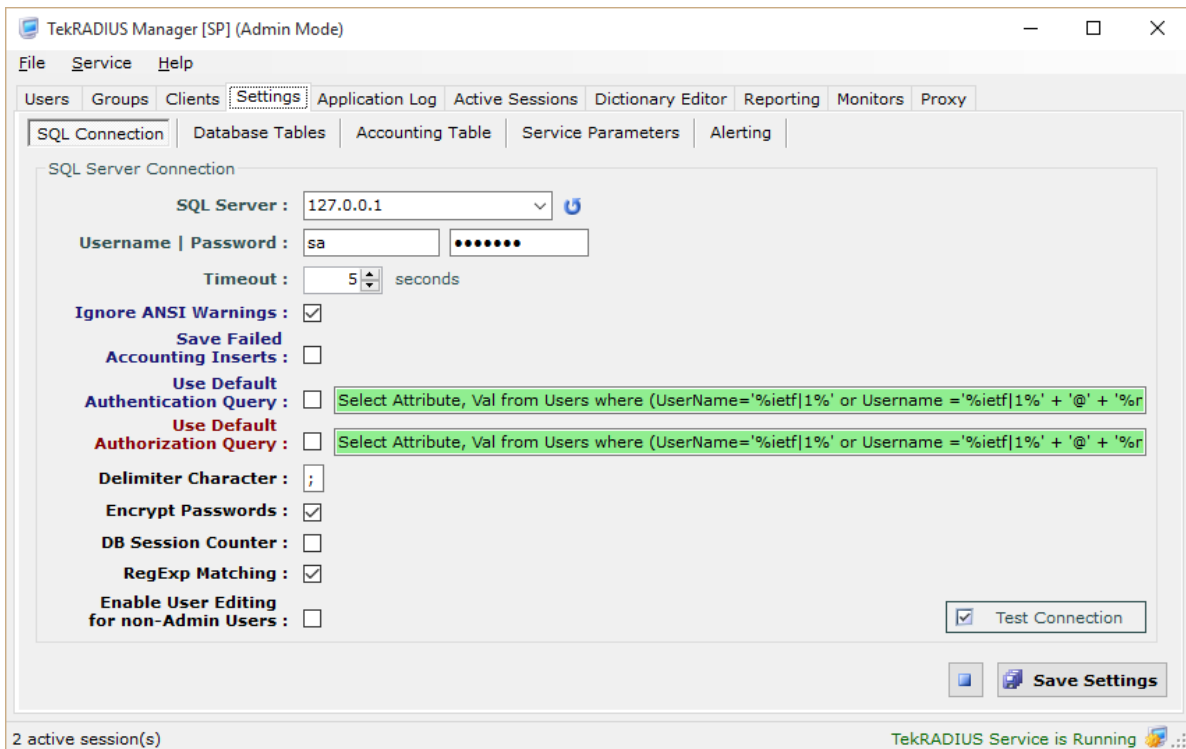


Click close to finish installation.

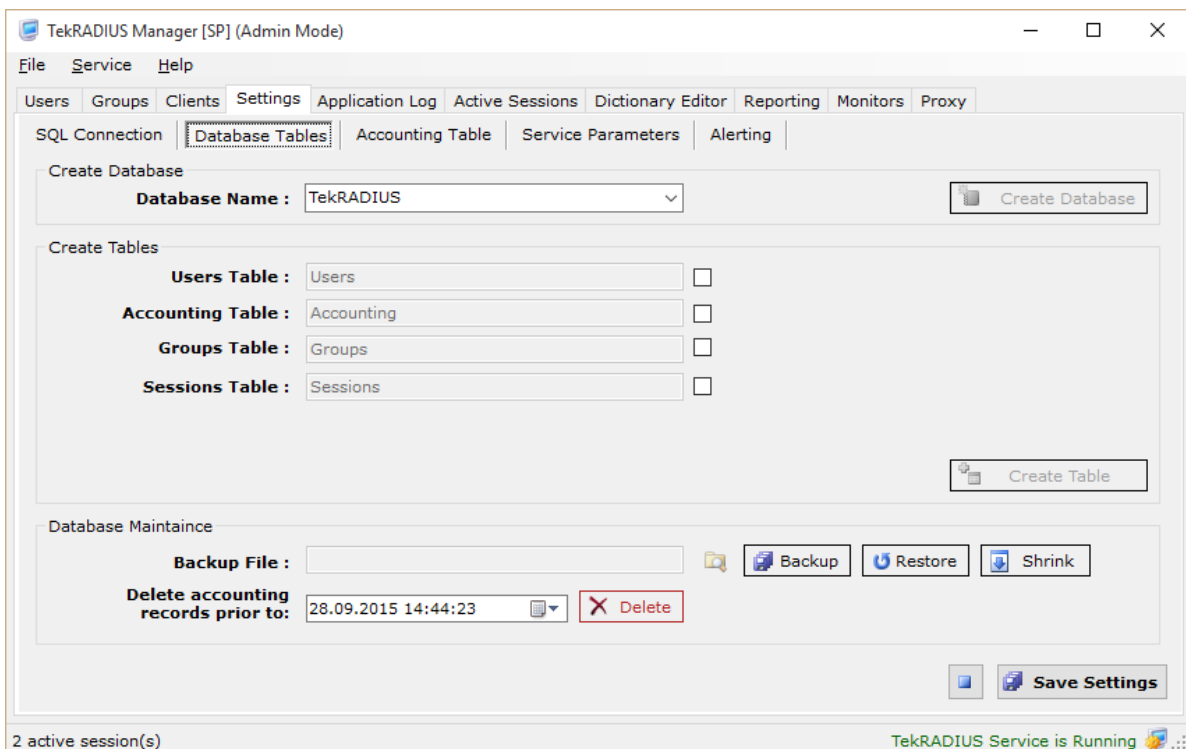


Select Programs / TekRADIUS LT / TekRADIUS LT Manager to run TekRADIUS LT Manager. TekRADIUS service is not started by TekRADIUS setup. You need to configure some basic settings and start TekRADIUS service manually. You can set startup mode to Automatic at Settings / Service Parameters.

TekRADIUS SQL Edition - Database Creation



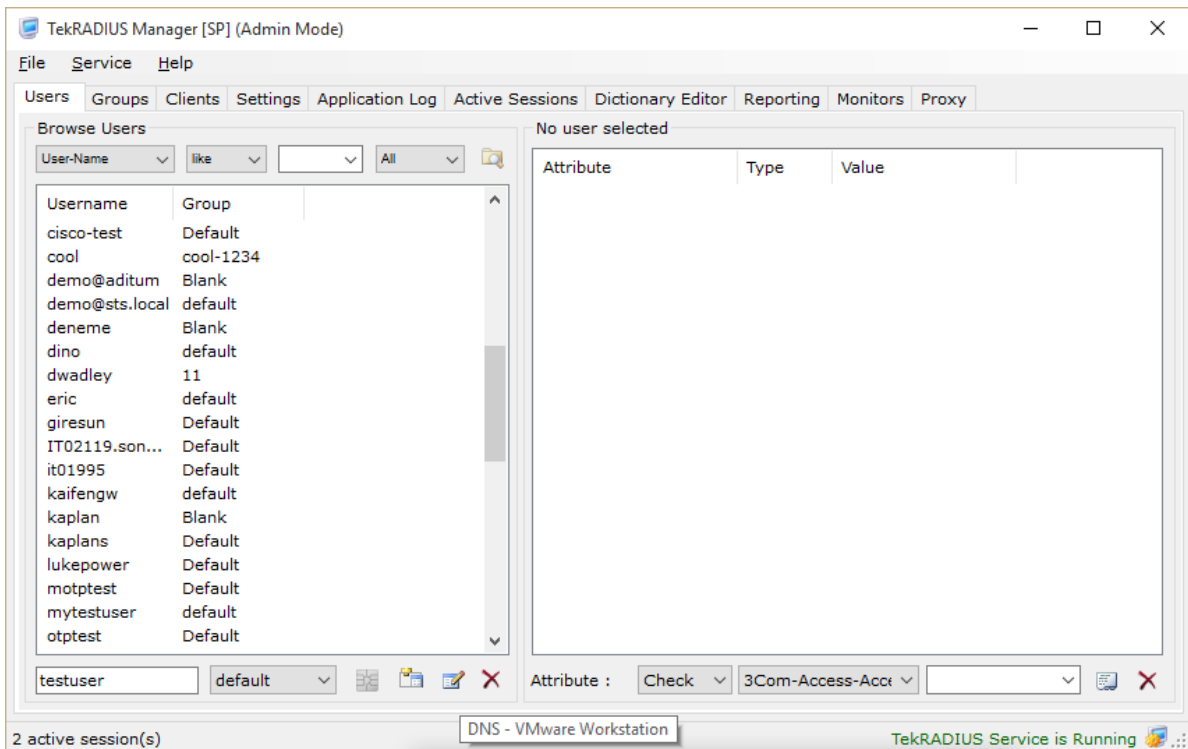
Set SQL connection parameters at Settings / SQL Server Connection tab. Although an “sa” equivalent SQL user needed to create the database and the tables, users can set a less privileged SQL user for regular operation after creating the database and the tables. Click Test Connection button to test SQL connection.



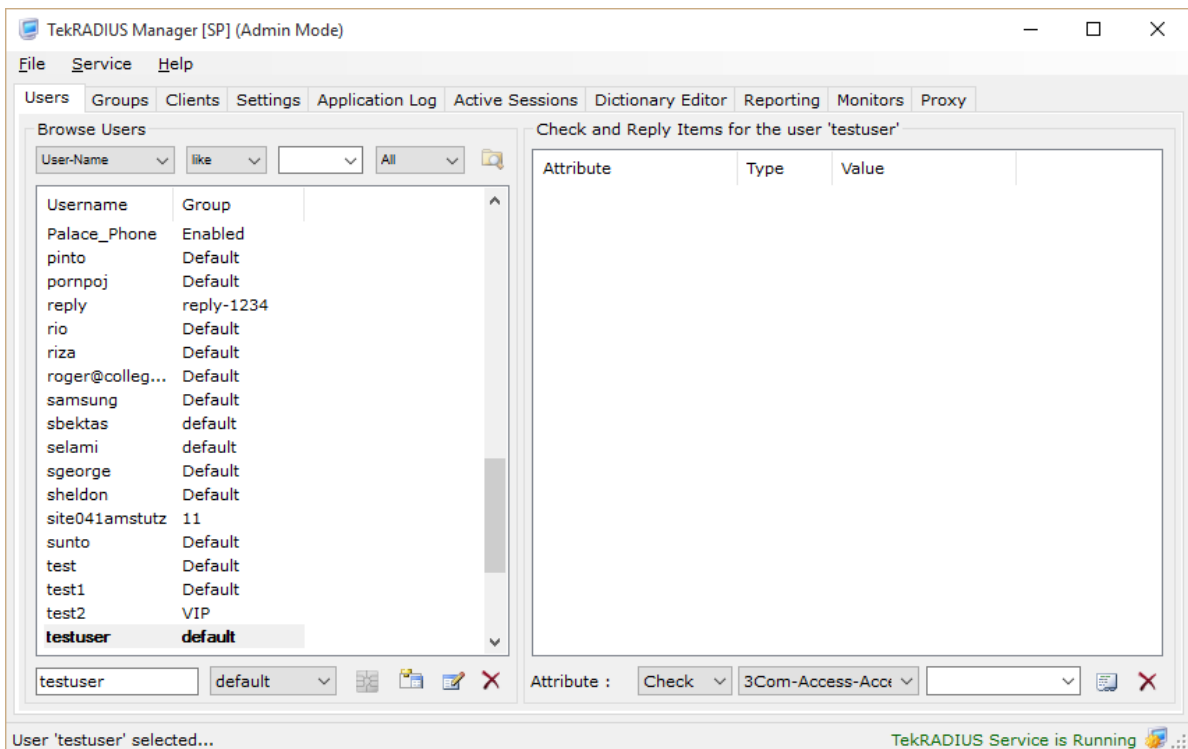
Create database and tables at Settings / Database Tables.

User and Group Profiles

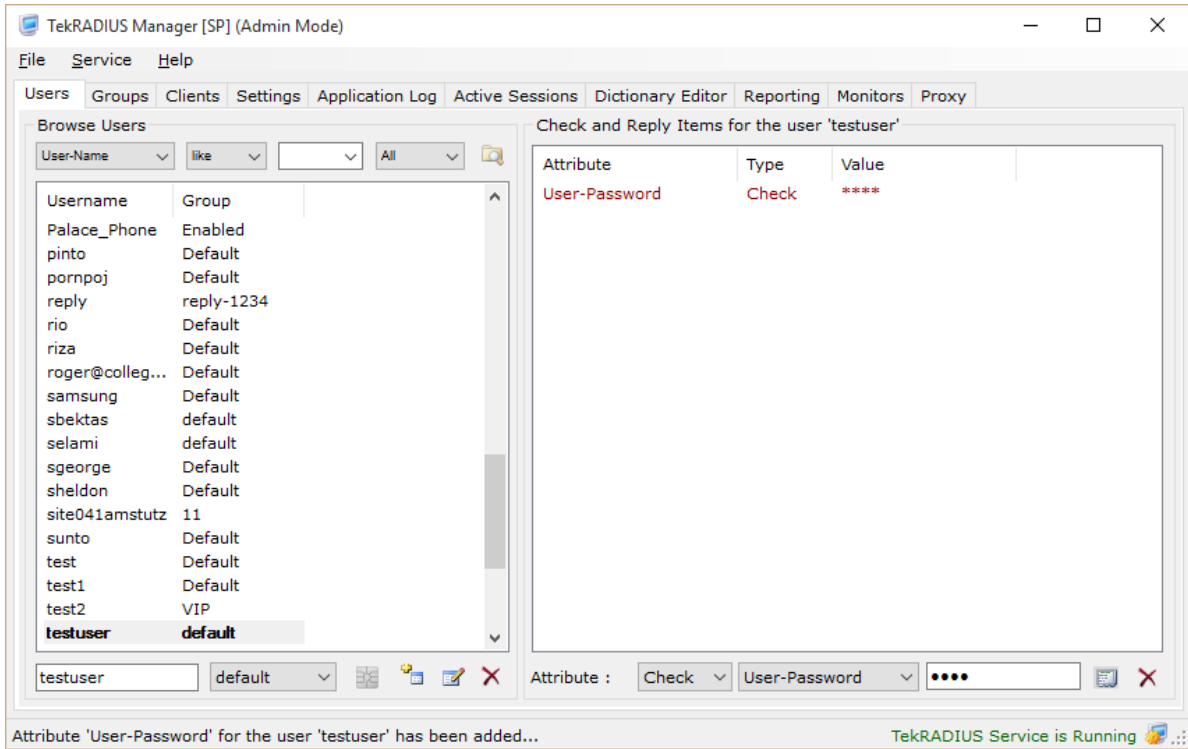
Click Users tab to add a user profile.



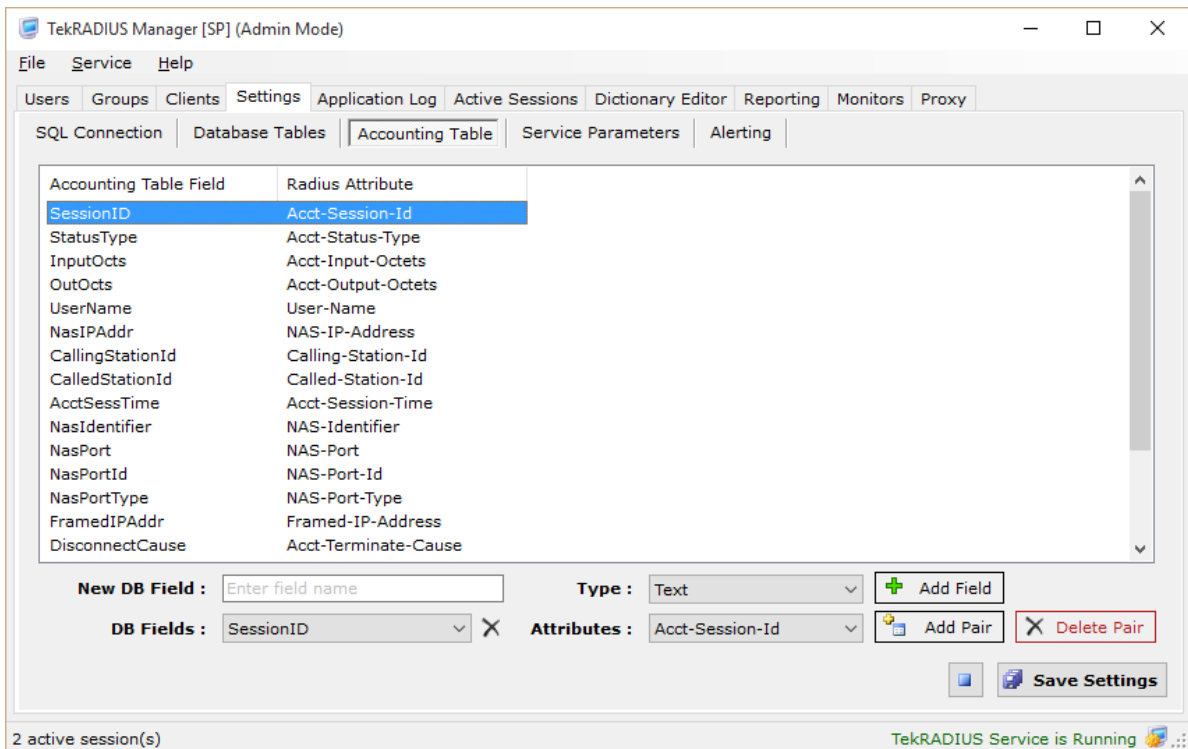
Enter a username and click Add button.



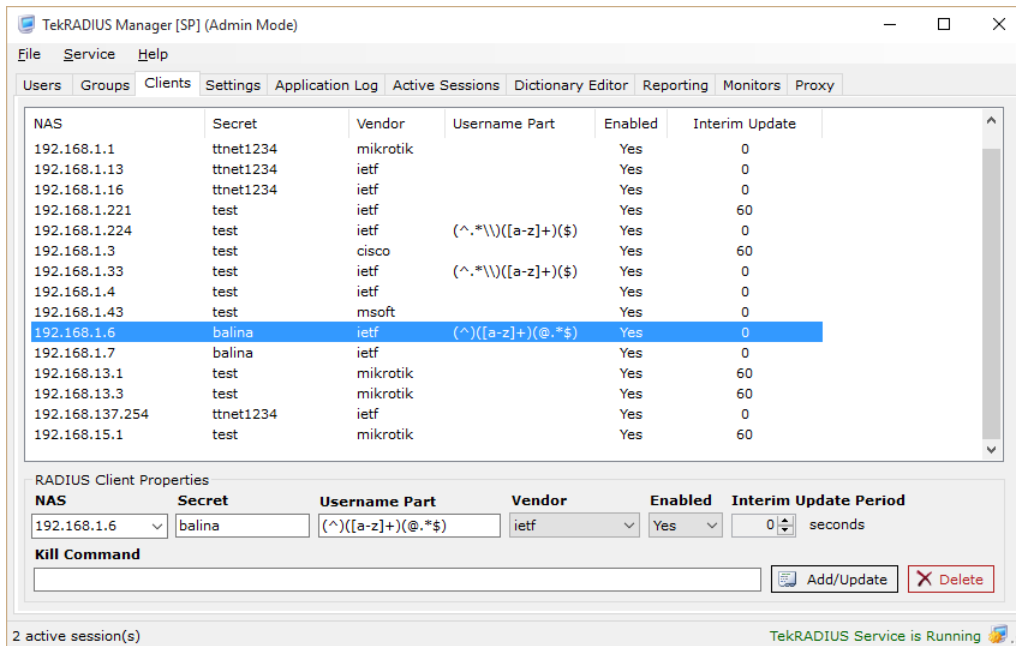
Select attribute User-Password (Check), enter password value and click Add/Update button in order to add a password for the user.



You can map RADIUS Accounting attributes to Accounting table fields.

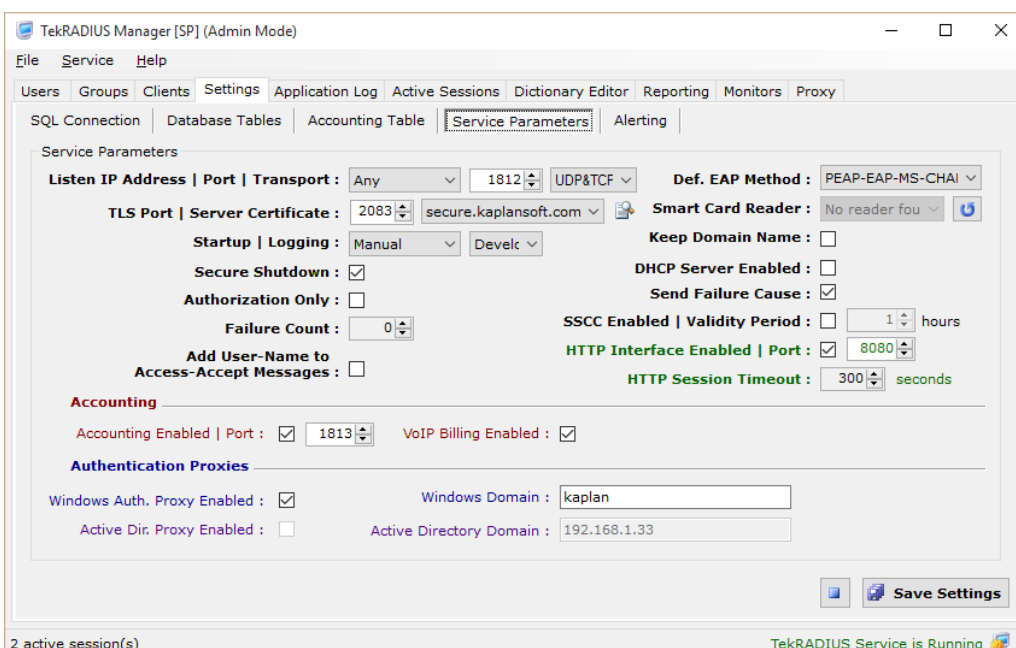


RADIUS Clients



You must create RADIUS clients entries for access servers like access points, VPN gateways, Hot Spot controllers Ethernet switches. Configured secrets must match in the ones configured in access servers. You do not need to specify Vendor expect VoIP authorization and billing applications. You can configure Interim Update Period parameter if your RADIUS client supports sending Interim Accounting Messages If TekRADIUS does not receive an update in specified period, active session and simultaneous session entries will be cleared.

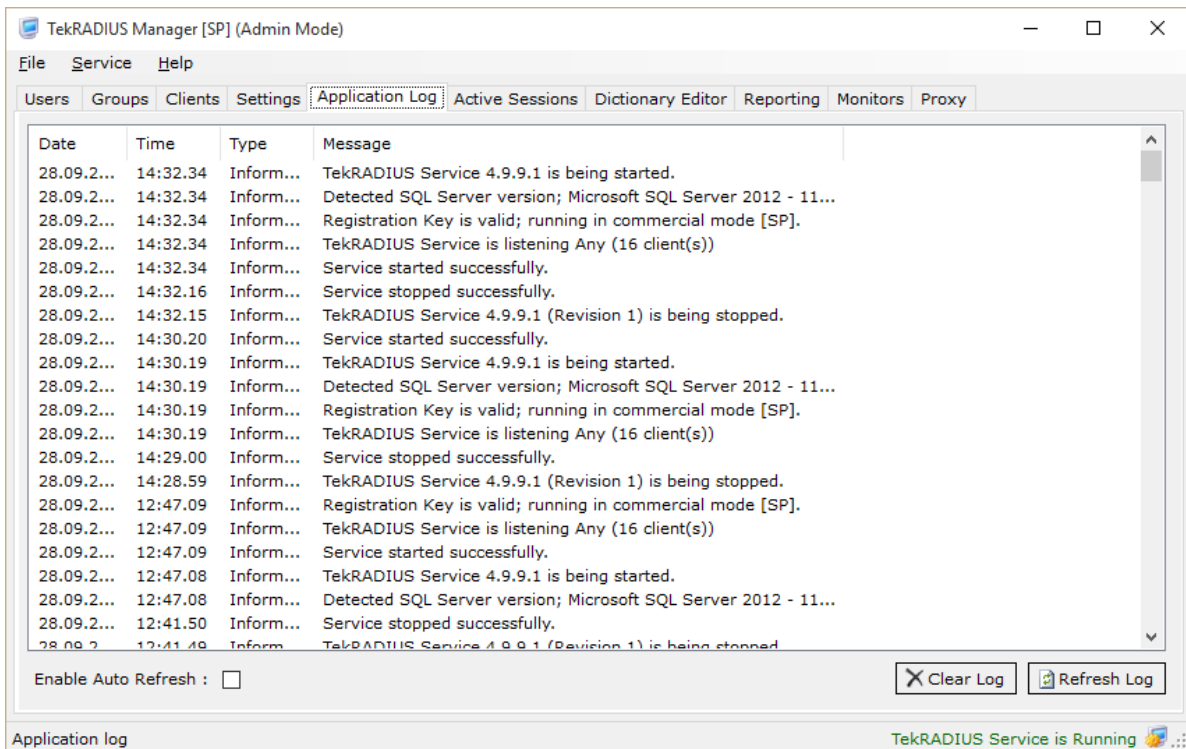
Service Parameters



You can configure several service specific parameters at Settings / Service Parameters. Select **Startup** to Automatic for automatic startup. Please do not click Authorization only unless you know what you are doing.

Set Service Parameters at Settings / Service Parameters tab. You can start TekRADIUS service by clicking start button next to Save Settings button. Do not forget to save settings prior to start the service.

Save settings and start TekRADIUS service from Service menu. You can examine Application log for startup messages.



Obtaining System Id and Applying Registration Key

You need to have your system id prior to buying a commercial license. Your system id is displayed at Help / About menu of TekRADIUS Manager.



You will receive your registration key electronically, most probably in zipped form. You need to extract Registration.key file prior to apply it onto your installation. You can either directly copy Registration.key file to the TekRADIUS application directory or import it through Help / Import License menu. Restarting TekRADIUS Manager and TekRADIUS service is recommended after applying the registration key.