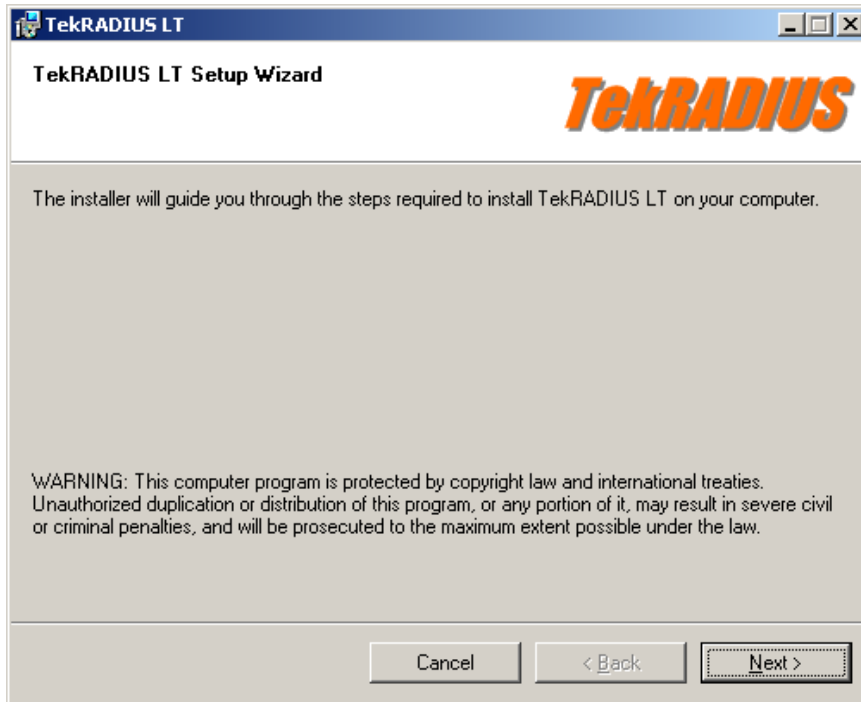
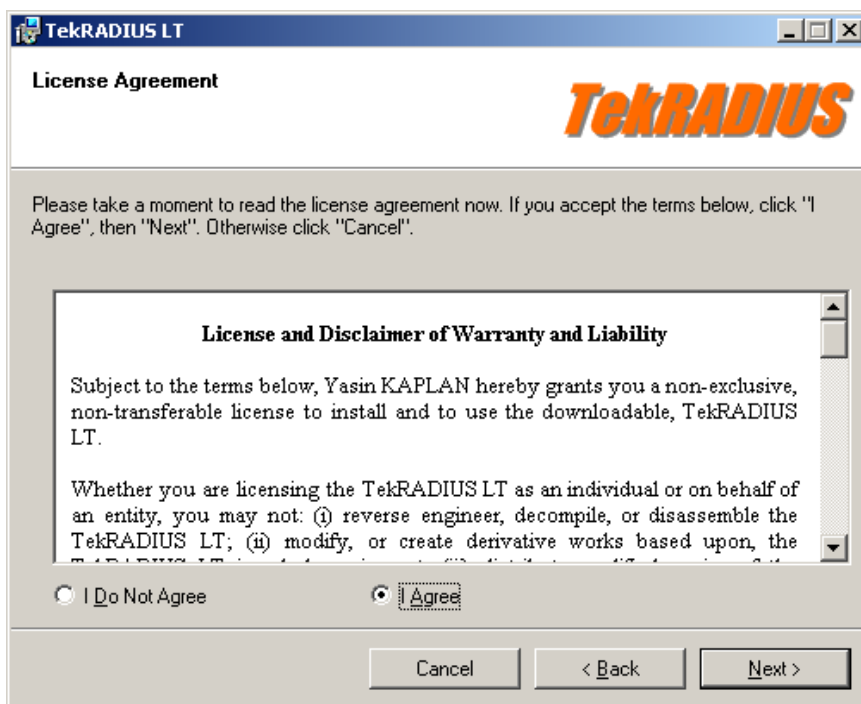


TekRADIUS Installation Steps

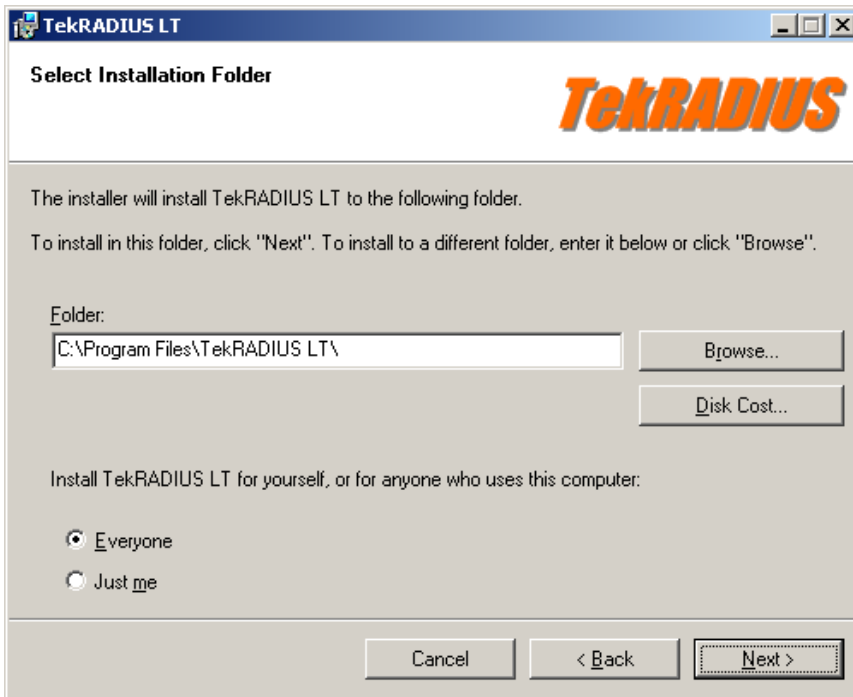
TekRADIUS distribution is in zip format. Extract contents of TerkRADIUSLT.zip (or TekRADIUS.zip) to a temporary directory and client setup.exe to start installation. Please make sure that you have Microsoft .NET Framework 2.0 installed on your computer. Click Next.



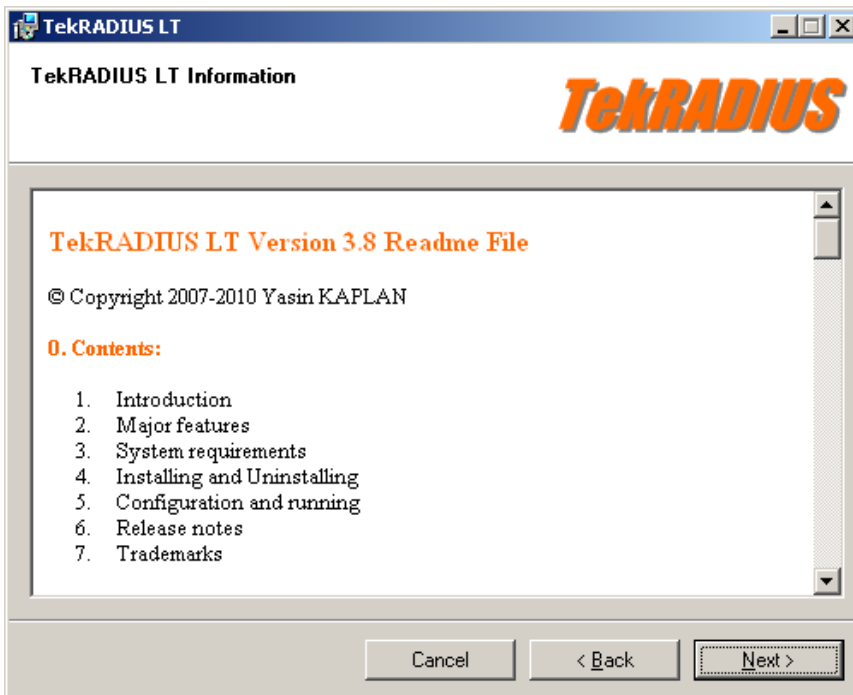
Read license agreement click "I Agree" if you are agreed with license terms and click next.



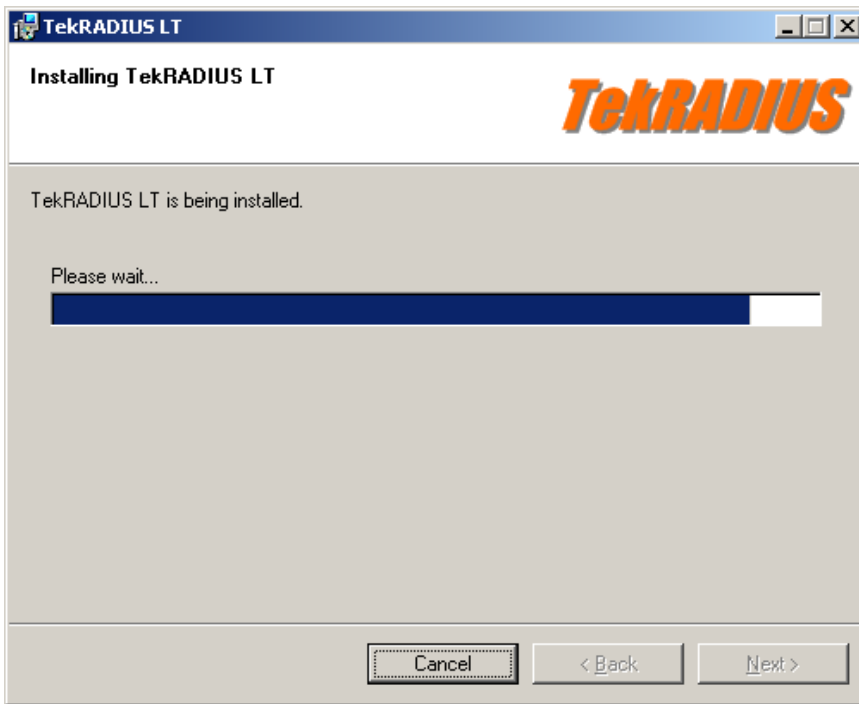
Select installation directory and click next.



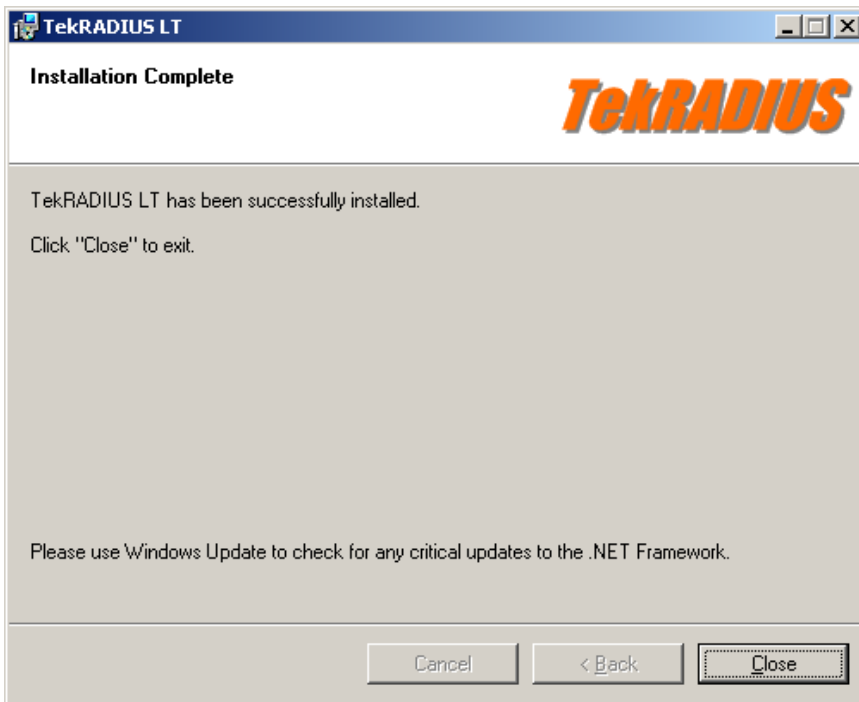
Read Readme information and click next.



TekRADIUS will be installed after these steps.

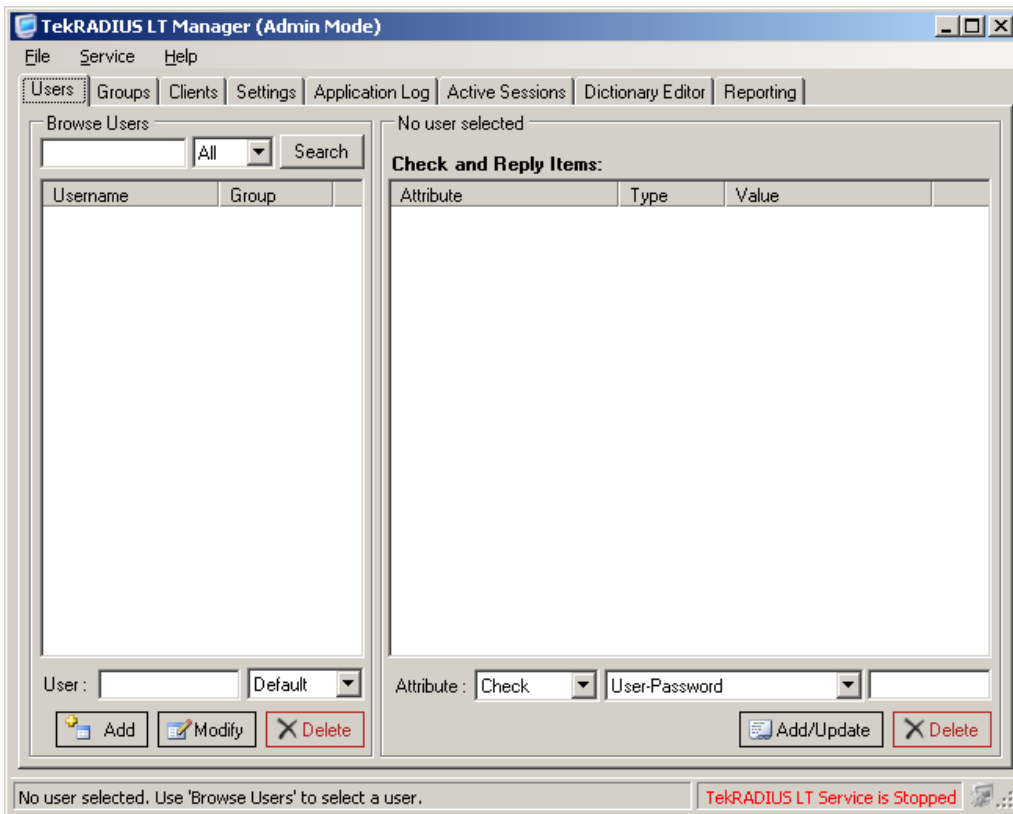


Click close to finish installation.

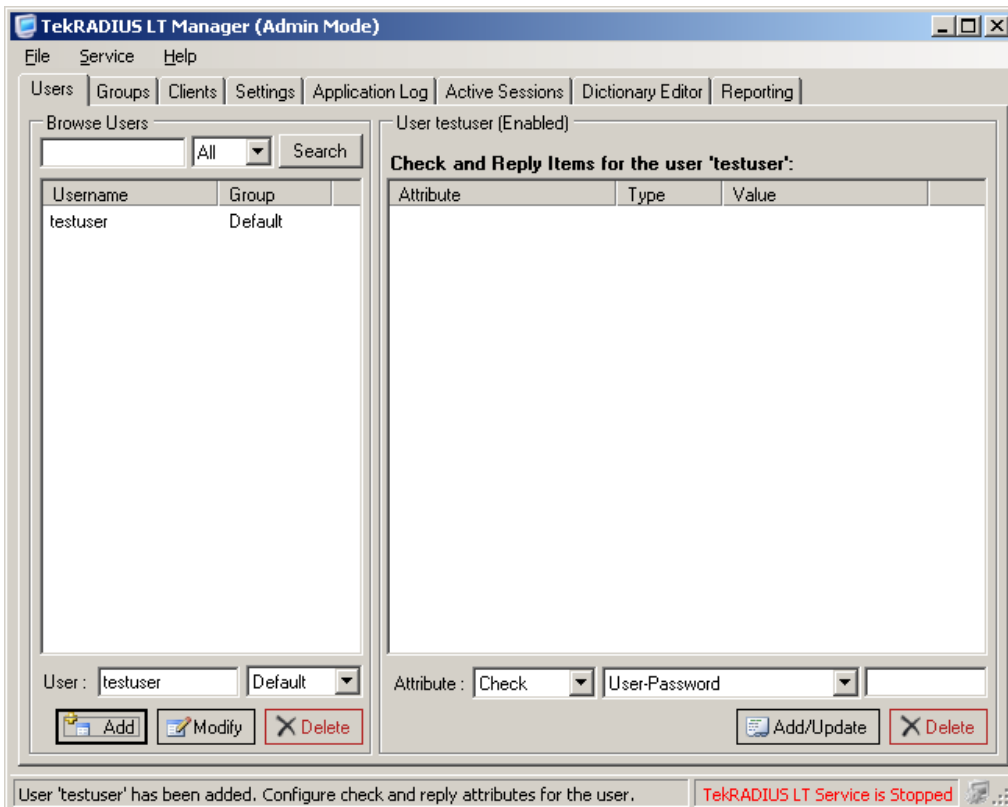


Select Programs / TekRADIUS LT / TekRADIUS LT Manager to run TekRADIUS LT Manager. TekRADIUS service is not started by TekRADIUS setup. You need to configure some basic settings and start TekRADIUS service manually. You can set startup mode to Automatic at Settings / Service Parameters.

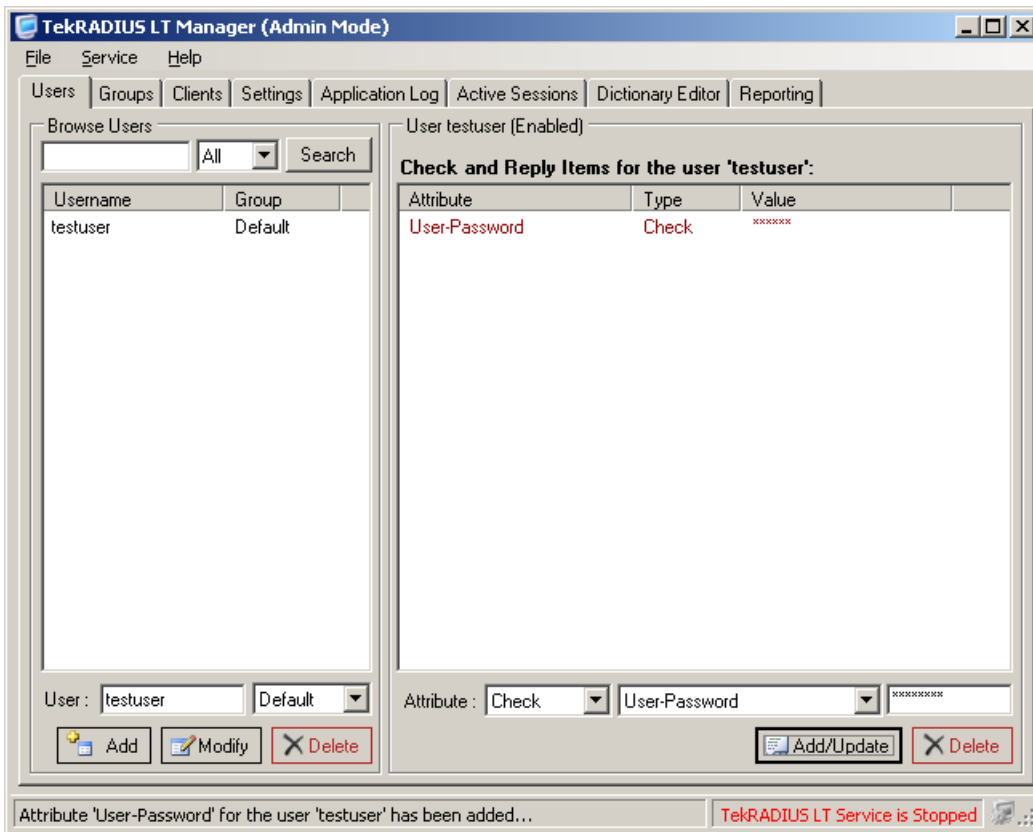
Click Users tab to add a user profile.



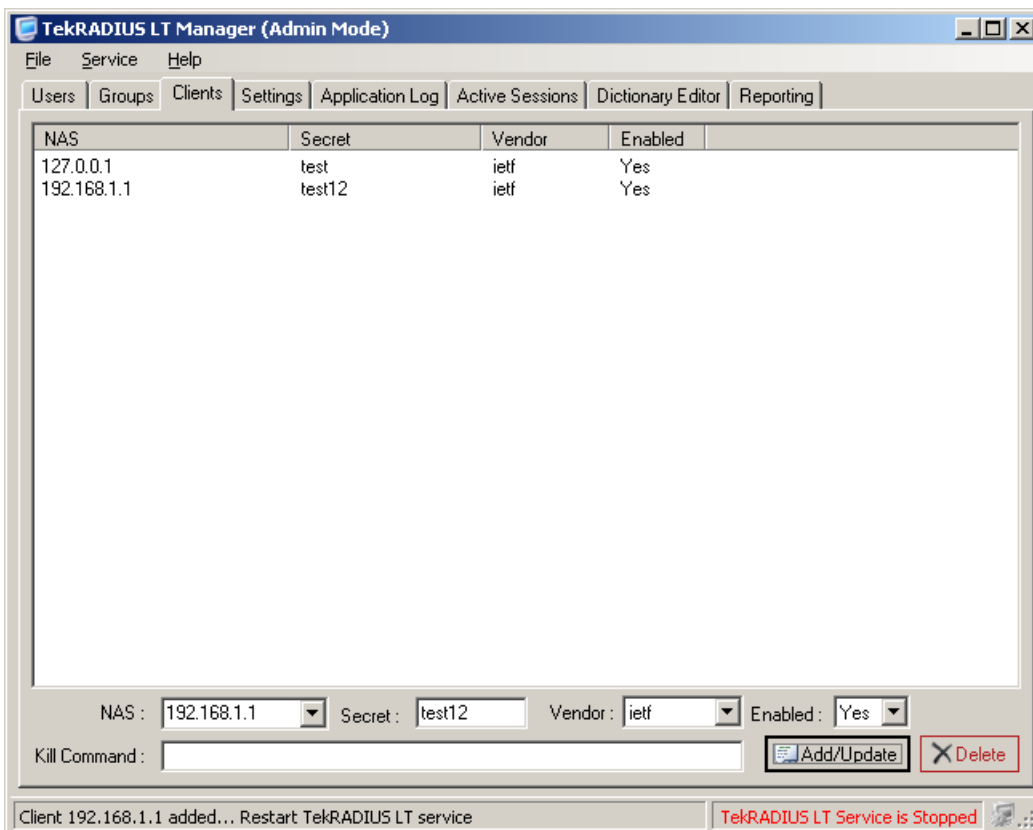
Enter a username and click Add button.



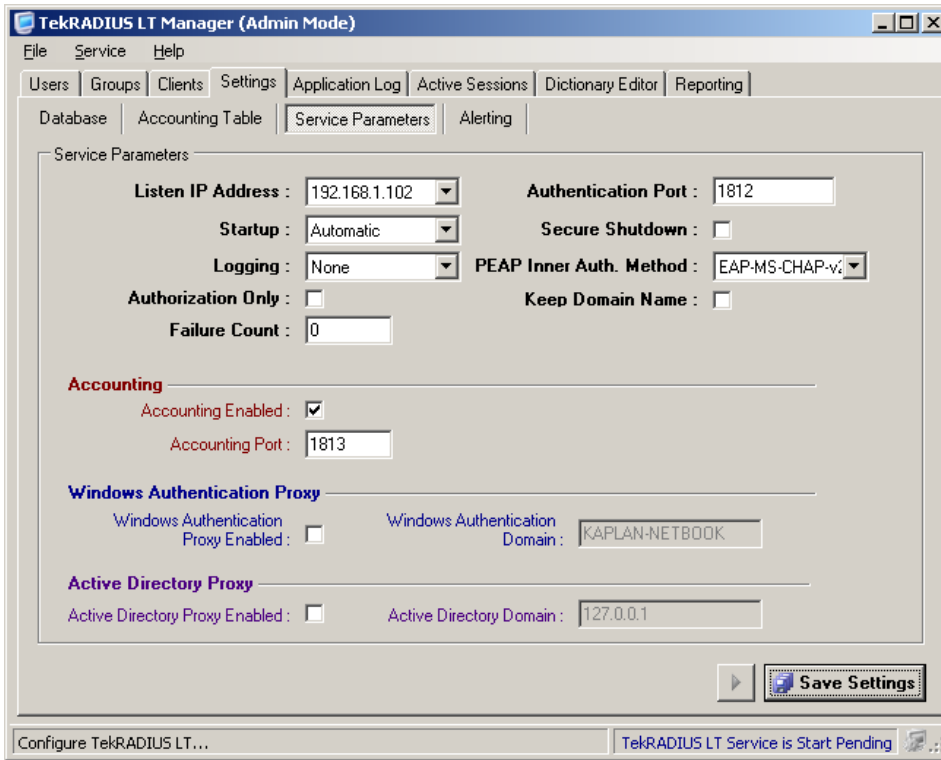
In order to add a password for the user, select attribute User-Password (Check), enter password value and click Add/Update button.



You must configure a RADIUS client entry for you access server (It can be a VPN Server, HotSpot application, Wi-Fi access point or a Dial-Up Access Server). Please make sure that Secret values match the one configured in TekRADIUS with the one configured in access server.



You can configure several service specific parameters at Settings / Service Parameters. Select **Startup** to Automatic for automatic startup. Please do not click Authorization only unless you know what you are doing.



Save settings and start TekRADIUS service from Service menu. You can examine Application log for startup messages.

