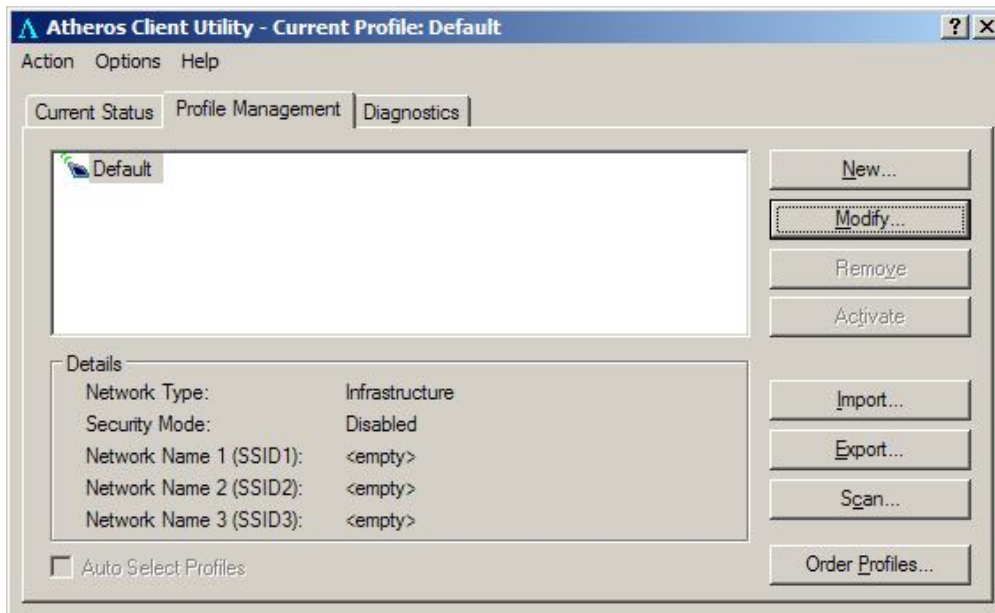
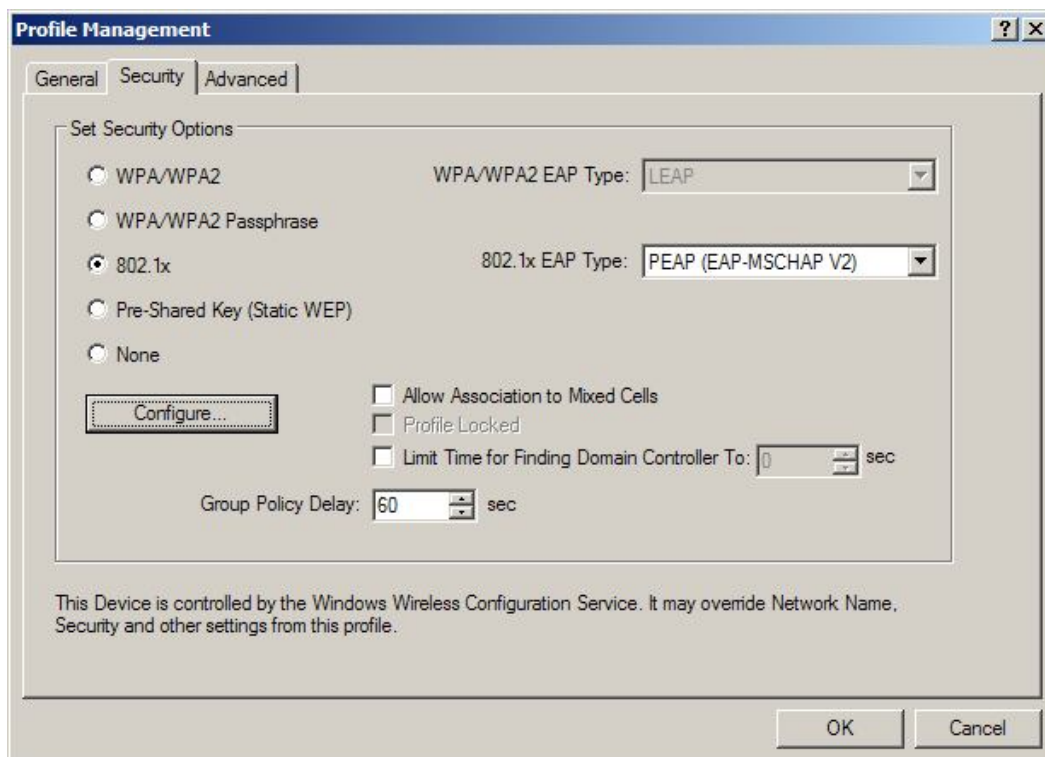


Atheros Client 802.1X Authentication Settings

This document provides information on how Atheros Client can be configured to use with TekRADIUS.



Right click Atheros Client icon in system tray and select Open Atheros Client Utility. Select “Default” profile and click “Modify” button or create a new one clicking “New” button.



Select **802.1x** and select **PEAP (EAP-MSCHAP V2)** as **802.1x EAP Type** and then click “Configure” button.

Configure PEAP (EAP-MSCHAP V2)

Use Machine Information for Domain Logon

Validate Server Identity

Trusted Root Certification Authorities

<Any>

When connecting, use:

Certificate

User Name and Password

Select a Certificate

User Information for PEAP (EAP-MSCHAP V2) Authentication

User Name: username

Password: ●●●●

Confirm Password: ●●●●

Settings... OK Cancel

If you have a copy of server certificate installed on local certificate store click **Validate Server Identity** option and select Server Certificate from the **Trusted Root Certification Authorities** list otherwise leave **Validate Server Identity** option unchecked. You can use Windows logon Username/Password as EAP Username/Password. If you choose to use Windows credentials click **Use Machine Information for Domain Logon** otherwise select **User Name and Password** in “When connecting, use:” section and enter user information to “User Information for PEAP (EAP MS-CHAP V2) Authentication” section.